

**Mod. 3317HL.G**

3317HL – EXPLORER CASES, ULTRALIGHT WATERPROOF CASE

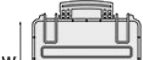
Small size watertight case injected with proprietary copolymer PP that makes it more resistant and lightweight than other similar products. IP67 and MIL Stan certified\* to be resistant to impact, liquids, shocks. Ideal storage for documents, tablets, electronic devices, tools and more.

- Metal reinforced padlock holes
- Single block high performance injected O-ring
- Automatic pressure valve
- Soft rubber handle grip
- Removable lid
- Anti-tilt support
- Certified to grant constant performances between -33°C and +90 °C.
- Six standard colors available

\*Pending certification release

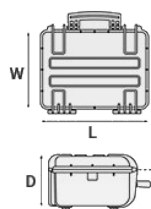


METRIC MM-KG-C°

	INTERNAL DIMENSIONS		EXTERNAL DIMENSIONS		OTHER DATA			
	L	LENGTH	330 mm	L	LENGTH	360 mm	WEIGHT EMPTY	1.78 Kg
	W	WIDTH	234 mm	W	WIDTH	304 mm	WEIGHT WITH FOAM	2.02 Kg
	D	DEPTH	170 mm	D	DEPTH	192 mm	WEIGHT WITH CUSTOM FOAM	Kg
	LID		68 mm				FOAM	
	BASE		102 mm				VOLUME	13.10 lt
EXPLORER CASES BY GT LINE SRL VIA DEL LAVORO, 9 LOC. CAPPELLANO - 40053 VALSAMOGGIA(BOLOGNA)-ITALY - TELEPHONE								
WWW.EXPLORERCASES.COM								

**BUOYANCY** 7.10 Kg/max  
**OPERATING** °C min -33 / max +90  
**TEMPERATURE**

IMPERIAL IN-LBS-F°



#### INTERNAL DIMENSIONS

**L** LENGTH 13 in  
**W** WIDTH 9 3/16 in  
**D** DEPTH 6 11/16 in  
**LID** 2 11/16 in  
**BASE** 4 in

#### EXTERNAL DIMENSIONS

**L** LENGTH 14 3/16 in  
**W** WIDTH 11 15/16 in  
**D** DEPTH 7 9/16 in

#### OTHER DATA

**WEIGHT EMPTY** 3.92 lbs  
**WEIGHT WITH FOAM** 4.45 lbs  
**WEIGHT WITH CUSTOM** lbs  
**FOAM**  
**VOLUME** 3.46 gal  
**BUOYANCY** 15.65 lbs/max  
**OPERATING** °F min -27.4 / max  
**TEMPERATURE** +194

## FEATURES



### **AUTOMATIC VALVE**

Automatic pressure release valve.



### **CORROSION PROOF METAL HINGES WITH LID STAY FEATURES**



### **INTERNAL SLOTS**

Internal slots for optional panel mounting brackets or panel mounting rings



### **LATCH**



### SEALING O-RING

(Art. NEOSEAL + nr. art.)



### PVC WATERPROOF I. D. REMOVABLE LABEL

(Art. LABELCOVER + nr. art.)



### LID CAN BE SET TO SLIDE-OFF

By releasing the back screw, lid becomes set to slide-off when opened at 70°



### COUNTERBALANCE SUPPORTS

(in certain models)

## ACCESSORIES



### PADDED DIVIDER FOR 3317

DIV3317

Padded dividers with internal adjustable partitions. Ideal to protect and transport any kind of sensitive equipment. Thanks to their modularity, they can be easily combined.



### LID PANEL WITH ORGANIZED POUCHES

PANEXPL33

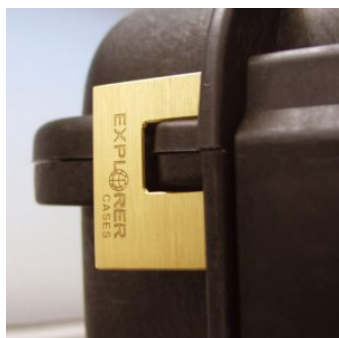
Practical and robust lid panel with pouches, ideal for small accessories and documents. Suitable for case 3317. Color: black.



### PADDED BAG WITH ADJUSTABLE DIVIDERS

BAG-T

Highly durable padded bag with rubber coated handle and waterproof zipper with lockable Velcro pull zipper. Practical external front pouch for documents, removable shoulder strap and rubber feet on the bottom to grant better grip. Internal adjustable padded dividers for flexible configuration. Ideal to protect sensitive equipment (ie electronic, photographic, broadcasting, medical etc.). Suitable for case 3317. Color: black/red.



### PATENTED HEAVY DUTY BRASS PADLOCK WITH KEYS

EXPL PADLOCK

Designed to fit snug to the Explorer case mould so as not to swing out

### CONVOLUTED FOAM SET FOR CASE 3317

LIDFOAM.33

(includes 2 pcs.)



### PATENTED COMBINATION PADLOCK

EXPL COMBILOCK

Designed to fit snug to the Explorer case mould so as not to swing out



### BLIND INSERT

KIT.EXPL.PLUGS

Kit includes 6 pcs.

Whenever the slots are not going to be used for in-built applications, those can be closed by blind inserts that will give the case a better and finished interior look.



### TSA APPROVED PADLOCK WITH COMBINATION

EXPL TSA.DIGILOCK

The new TSA approved padlocks allow tsa® airport security agents to open the case without destroying the lock. TSA agents are trained to recognize the travel sentry certified logo and should not break the case lock.







### METAL BRACKET

KIT SUPP.EXPL.

Kit includes 6 pcs.

All models (except for the 1908) are internally equipped with specific slots, to apply the optional metal or plastic brackets which provide either a panel's fixing points or a fix mechanical joint inside the case, to build more complete applications. This way the case becomes a real workstation, rather than just a carrying container. As the panel mounting brackets are mechanically fixed by screws, they can be removed when necessary. The dedicated screws allow the case to remain waterproof, and help the panels to be removed easily and quickly



### PANEL RING FOR CASE 3317

PANRING33

Includes Metric system fixing screws.

User friendly panel frames, they can be used to fix several kind of panels, from plastic to aluminum ones. Equipped with an additional gasket (which will be squeezed in between the panel and the frame) they can provide the case with a perfect instrumentation surface and a further humidity and dust resistance when the case is used in the field.

Completely removable, resistant and light, these panel rings help to transform the Explorer cases into practical workstations.



### PLASTIC BRACKET

KIT SUPP.PLAST.

Kit includes 6 pcs.

All models (except for the 1908) are internally equipped with specific slots, to apply the optional metal or plastic brackets which provide either a panel's fixing points or a fix mechanical joint inside the case, to build more complete applications. This way the case becomes a real workstation, rather than just a carrying container. As the panel mounting brackets are mechanically fixed by screws, they can be removed when necessary. The dedicated screws allow the case to remain waterproof, and help the panels to be removed easily and quickly



### FOAM SET FOR CASE 3317

FOAM.3317

Layers of pre-cubed foam for the bottom and convoluted foam for the lid. The pre-cubed foam allows the user to tailor the insert to their own individual requirement. The convoluted foam in the lid helps to firmly keep the stored equipment when the case is closed. Available for 3317 model. Color: dark grey. [DOWNLOAD PDF](#)



### PANEL RING FOR CASE 3317

PANRING33.USA

Includes Imperial system fixing screws.

User friendly panel frames, they can be used to fix several kind of panels, from plastic to aluminum ones. Equipped with an additional gasket (which will be squeezed in between the panel and the frame) they can provide the case with a perfect instrumentation surface and a further humidity and dust resistance when the case is used in the field.

Completely removable, resistant and light, these panel rings help to transform the Explorer cases into practical workstations.



### HANDY BACKPACK CARRYING SYSTEM FOR CASES

BACKPACK M

Made of robust tear resistant polyester. Designed with adjustable and comfortable padded shoulder straps and belt.

Provided with an external pocket for small accessories, with Velcro strap.

Ideal wherever a free hand movement is required, like in outdoor activities, extreme sports, emergency, rescue, trekking, industrial field, etc.

Suitable for models 3317, 3818 and 5117.

Color: black.



## SPARE PARTS



### Polyurethane o-ring seal for model 3317

KIN.0848

Includes:  
1 o-ring



KIN.0496

### Name tag holder for mod. 2712-2717-3317-3317W-3818-5117-5122-MUB78

KIN.0496

Includes: 1 transparent name tag holder



KIN.0429

### Latch for models from 2712 to 3317W

KIN.0429

Includes: 1 military green latch 1 fixing pin



KIN.0439

### Latch for models from 2712 to 3317W

KIN.0439

Includes: 1 black latch 1 fixing pin



**Latch for models from 2712 to 3317W**

KIN.0437

Includes: 1 orange latch 1 fixing pin



**Handle for model from 2712 to 3317W**

KIN.0465

Includes: 1 military green handle 2 fixing pins



**Handle for models from 2712 to 3317W**

KIN.0475

Includes: 1 black handle 2 fixing pins



**Handle for model from 2712 to 3317W**

KIN.0473

Includes: 1 orange handle 2 fixing pins

